

# SHINWA EXPRESS

Information

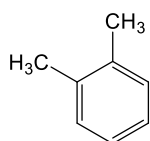
VOL. A24

## ULTRON ES-CD-2 (L45)

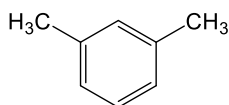
ULTRON ES-CD-2 is an up-graded version of ULTRON ES-CD with good scalability (5  $\mu\text{m}$  and 3  $\mu\text{m}$ ).

NEW

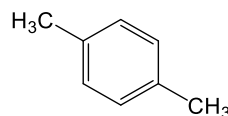
### Scalability application



o-Xylene



m-Xylene

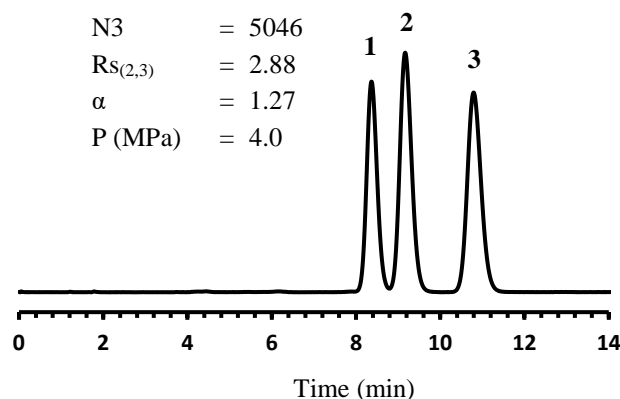


p-Xylene

1. o-Xylene
2. m-Xylene
3. p-Xylene

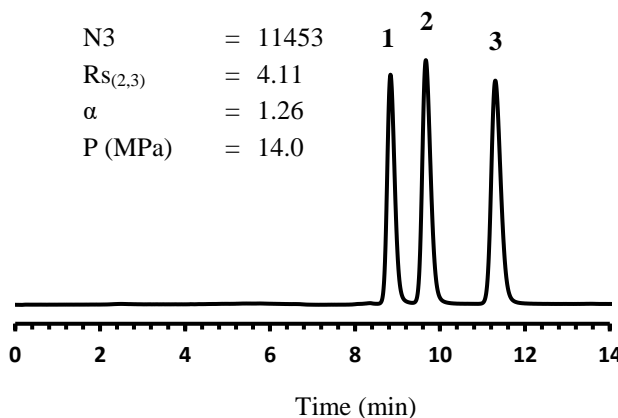
#### ES-CD-2 (5 $\mu\text{m}$ )

N3 = 5046  
 $RS_{(2,3)}$  = 2.88  
 $\alpha$  = 1.27  
 P (MPa) = 4.0



#### ES-CD-2 (3 $\mu\text{m}$ )

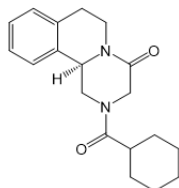
N3 = 11453  
 $RS_{(2,3)}$  = 4.11  
 $\alpha$  = 1.26  
 P (MPa) = 14.0



Column: ULTRON ES-CD-2 (5  $\mu\text{m}$ )  
 ULTRON ES-CD-2 (3  $\mu\text{m}$ )  
 Column size: 150 mm L x 4.6 mm I.D.  
 Mobile phase:  $\text{CH}_3\text{OH}/\text{H}_2\text{O} = 50/50$   
 Flow rate: 0.6 mL/min

Column temp.: 30°C  
 Detection: UV-254 nm  
 Sample: 1. m-Xylene  
 2. o-Xylene  
 3. p-Xylene  
 Injection vol.: 10  $\mu\text{L}$

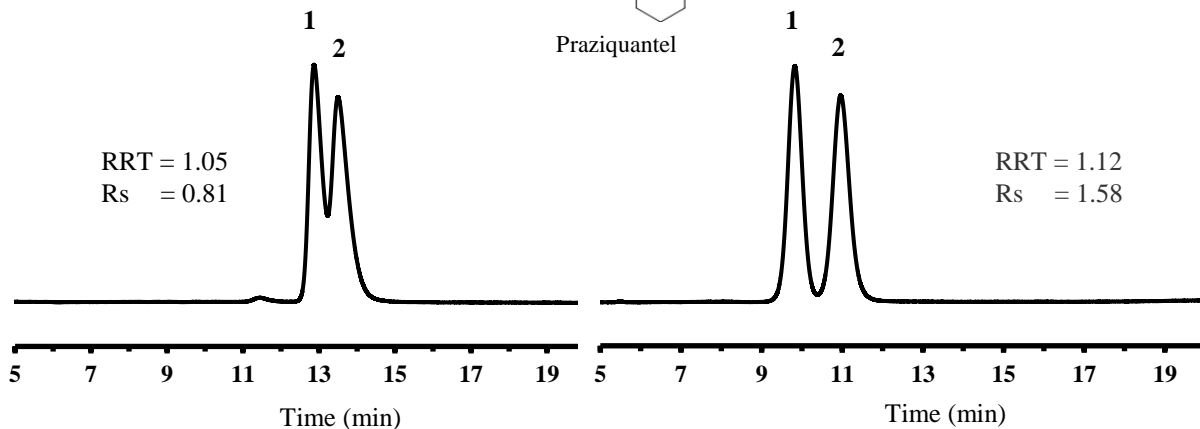
## Application



Praziquantel

ES-CD (5  $\mu\text{m}$ )

ES-CD-2 (5  $\mu\text{m}$ )



※RRT(Relative retention time) =  $Rt_2/Rt_1$

Column: ULTRON ES-CD (5  $\mu\text{m}$ )  
 ULTRON ES-CD-2 (5  $\mu\text{m}$ )  
 Column size: 150 mm L x 4.6 mm I.D.  
 Mobile phase:  $\text{CH}_3\text{CN}/50\text{mM HCO}_2\text{NH}_4$  (pH 3.6) = 20/80  
 Flow rate: 0.7 mL/min

Column temp.: 45°C  
 Detection: UV-230 nm  
 Sample: Praziquantel  
 Injection vol.: 2  $\mu\text{L}$

## ■ Analytical column specifications ■

P/N	Product name	Particle size ( $\mu\text{m}$ )	Column dimensions Length x I.D. (mm)
LCC-02221-151	ULTRON ES-CD-2	3	150 x 2.0
LCC-02221-153			250 x 2.0
LCC-02221-177			150 x 4.6
LCC-02221-179			250 x 4.6
LCC-02429-144	ULTRON ES-CD-2 (Two Guard Cartridges)	3	5 x 2.0
LCC-02429-171			10 x 4.6
LCC-01721-177	ULTRON ES-CD-EP	3	150 x 4.6
LCC-02231-151	ULTRON ES-CD-2	5	150 x 2.0
LCC-02231-153			250 x 2.0
LCC-02231-177			150 x 4.6
LCC-02231-179			250 x 4.6
LCC-02439-144	ULTRON ES-CD-2 (Two Guard Cartridges) ※	5	5 x 2.0
LCC-02439-171			10 x 4.6
LCC-01631-179	ULTRON ES-CD-F	5	250 x 4.6

Please do not hesitate to contact us for the other dimensions.  
 Please feel free to contact us with questions related to analyses.  
 Column screening services are also available.

Please be aware that specifications and prices are subject to change without prior notification.