

SHINWA EXPRESS

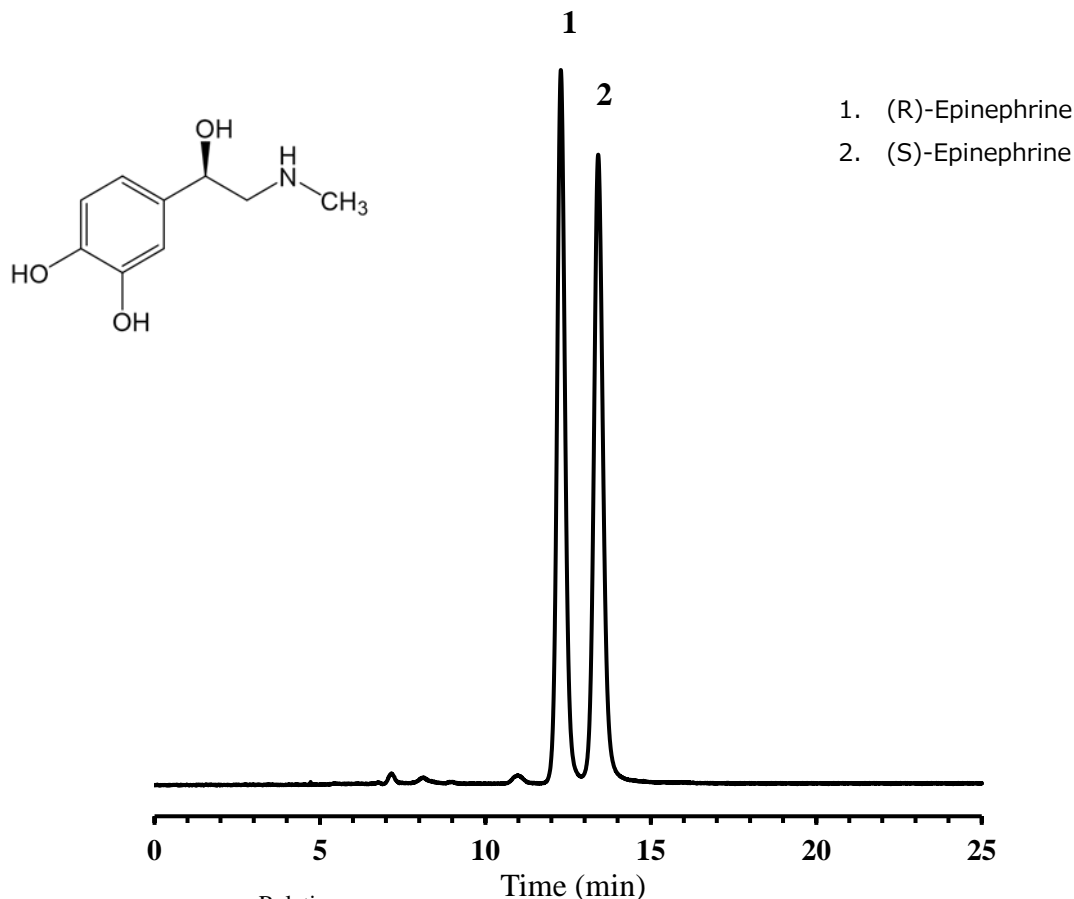
Information

VOL. A25

ULTRON ES-CD-EP

NEW

The ULTRON ES-CD-EP: Designed to confirm separations of epinephrine as per the USP standards!



	Relative retention time (Peak2/Peak1)	Resolution	Relative standard deviation of peak area	S/N ratio
Results	1.1	2.4	Peak 1: 0.36 % Peak 2: 0.45 %	Peak 1: 105 Peak 2: 93
USP requirements	about 1.0 and 1.1	≥ 1.5	$\leq 2.0\%$	≥ 10

Column: ULTRON ES-CD-EP (3 μ m)
 Column size: 150 mm L x 4.6 mm I.D.
 Mobile phase: Solution A/CH₃CN = 99/1
 ※ Solution A : 10mM CH₃CO₂NH₄(pH 4.0)
 Flow rate: 0.3 mL/min

Column temp.: 25°C
 Detector: UV-280 nm
 Diluent: Solution A
 Injection vol.: 10 μ L

■ Analytical column specifications ■

P/N	Product name	Particle size (μm)	Column dimensions Length x I.D. (mm)
LCC-02221-151	ULTRON ES-CD-2	3	150 × 2.0
LCC-02221-153			250 × 2.0
LCC-02221-177			150 × 4.6
LCC-02221-179			250 × 4.6
LCC-02429-144	ULTRON ES-CD-2 (Two Guard Cartridges)		5 × 2.0
LCC-02429-171			10 × 4.6
LCC-01721-177	ULTRON ES-CD-EP		150 × 4.6
LCC-02231-151	ULTRON ES-CD-2		5
LCC-02231-153		250 × 2.0	
LCC-02231-177		150 × 4.6	
LCC-02231-179		250 × 4.6	
LCC-02439-144	ULTRON ES-CD-2 (Two Guard Cartridges)	5 × 2.0	
LCC-02439-171		10 × 4.6	
LCC-01631-179	ULTRON ES-CD-F	250 × 4.6	



※ Please do not hesitate to contact us for the other dimensions.

Please feel free to contact us with questions related to analyses.
Column screening services are also available.

Please be aware that specifications and prices are subject to change without prior notification.