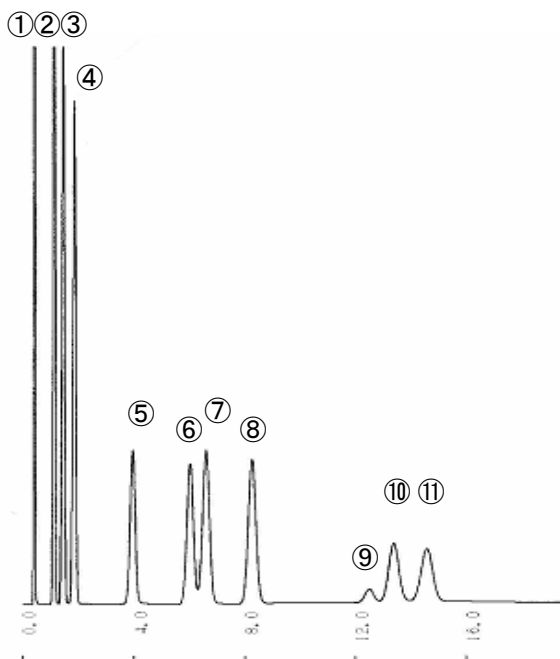


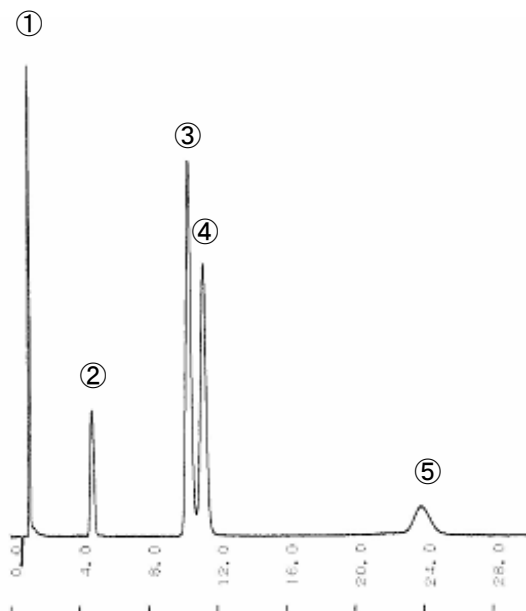
塩素化合物の分析



- ① Methane
- ② Acetylene
- ③ Ethylene
- ④ Ethane
- ⑤ Chloromethane
- ⑥ Propylene
- ⑦ Propane
- ⑧ Vinylchloride
- ⑨ Dichloromethane
- ⑩ iso-Butane
- ⑪ n-Butane

Column : SHINCARBON ST 50/80
 1.0 m x 3.0 mm I.D. Stainless
 Column temp : 170 °C ~ 270 °C
 Program rate 8 °C/min
 Injection : 0.25mL (280 °C)
 Detector : FID (280 °C)
 Carrier gas : N₂, 50 mL/min

硫黄化合物の分析



- ① Methane
- ② Ethane
- ③ Carbonyl sulfide
- ④ Sulfur dioxide
- ⑤ Propane

Column : SHINCARBON ST 50/80
 2.1 m x 3.2 mm I.D. Glass
 Column temp : 190 °C
 Injection : 1.0 mL (190 °C)
 Detector : FPD (190 °C)
 Carrier gas : N₂, 50 mL/min

